

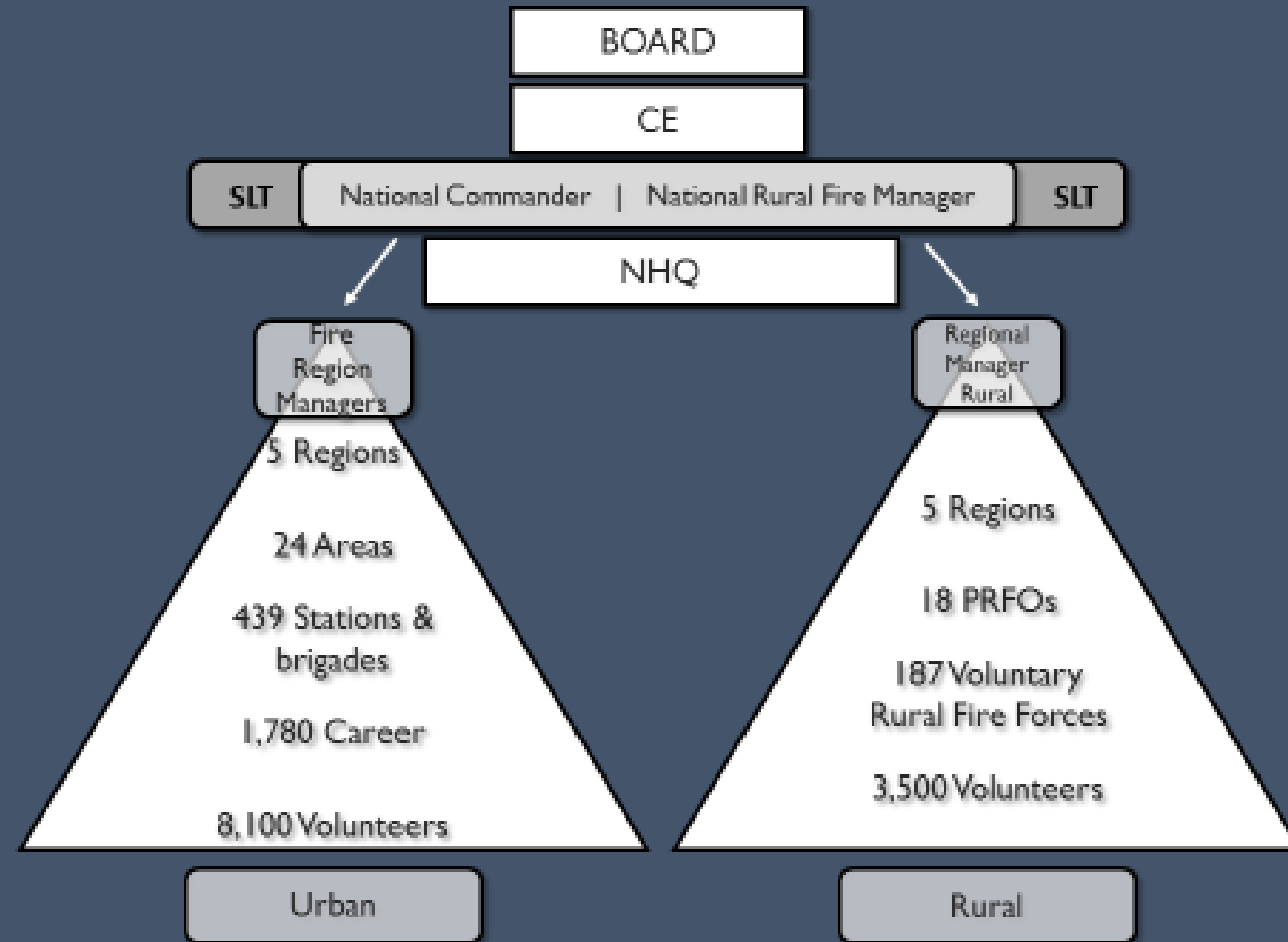


David Strong Transition Director

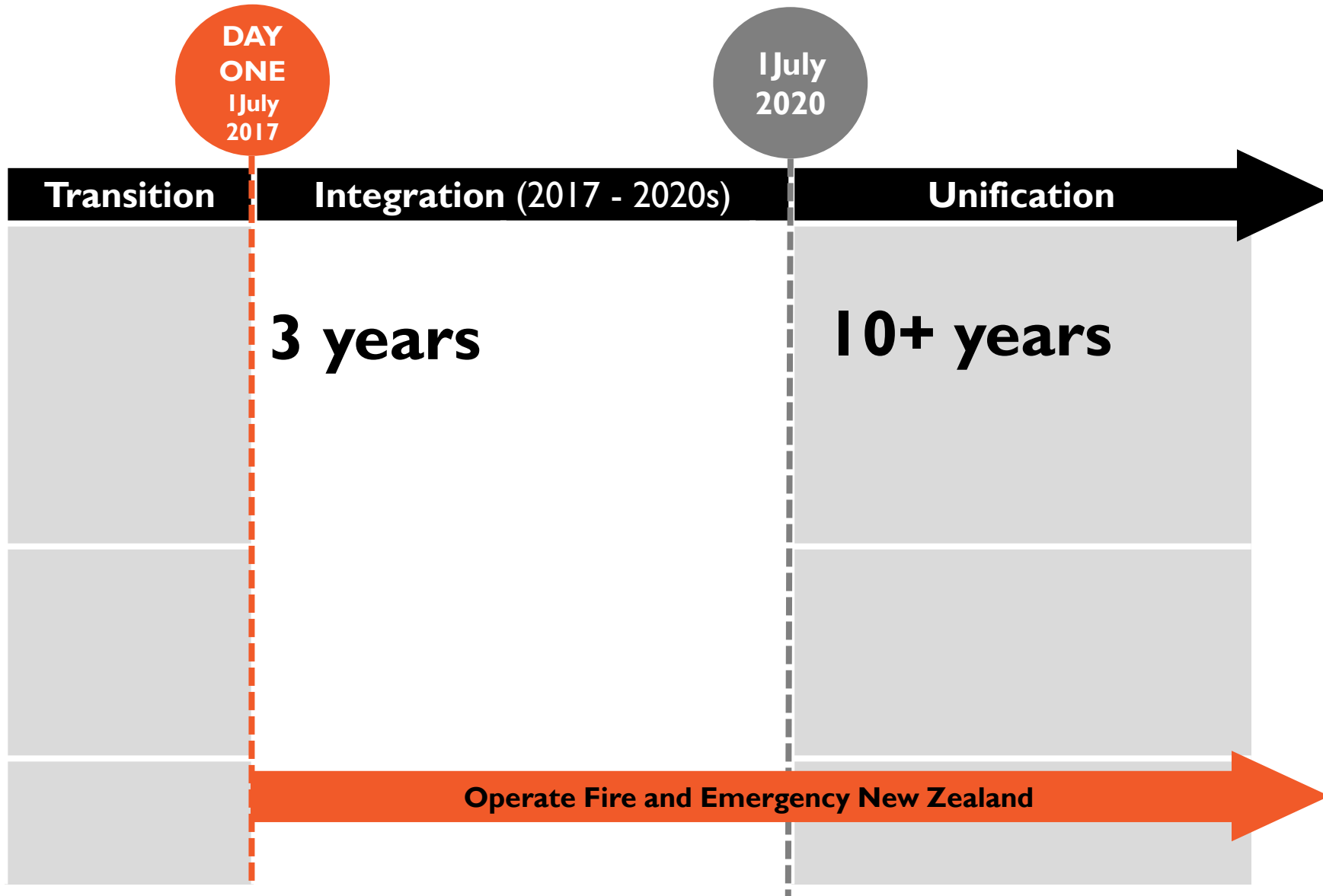
INTEGRATION (2017-2020): PHASE 2 BLUEPRINT & NEXT THREE YEARS



The current state as at 1 July 2017

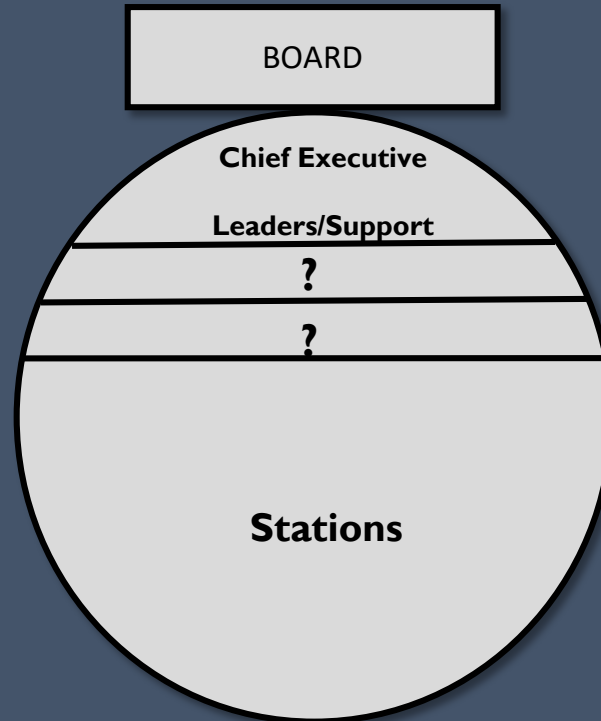


Three phases





The future state - 30 June 2020



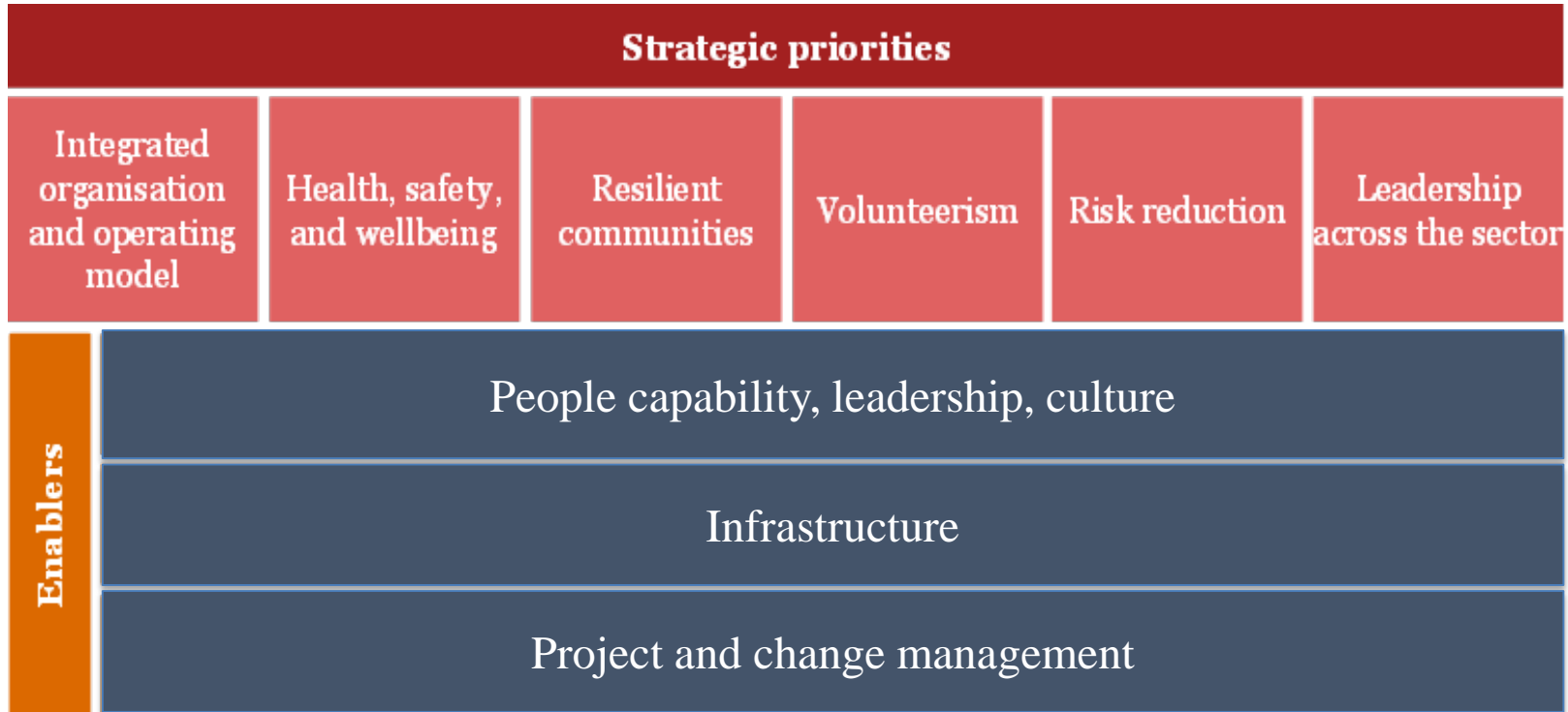


The Phase 2 Blueprint





The Phase 2 Blueprint





YEARS ONE TO THREE

YEAR ONE

YEAR TWO

YEAR THREE

Integrated org & operating model

Design

Implement

Safety, health and wellbeing

Continue design and implementation

Resilient communities

Continue design

Implement

Volunteerism

Continue design and implementation

Risk reduction

Continue design and implementation

Leadership across the sector

Design

Implement



Next steps

- Support the organisation through 'go live' (to 30 Sept 17)
- Re-set the Transition Project to an Integration Project by 30 Sept 17

Integration Project:

- Operates within Fire and Emergency New Zealand
- Retains project approach
- Co-design continues
- Maintains momentum



PANEL DISCUSSION & QUESTIONS FROM THE FLOOR