

# LOCAL ADVISORY COMMITTEES

## Pilot 1: Greater Auckland



Greater Auckland has been chosen as the location for the first of two pilots to develop and test processes for Local Advisory Committees.

Local Advisory Committees are proposed under the Fire and Emergency New Zealand Bill as local advisors to Fire and Emergency New Zealand (FENZ) on their community's fire and emergency risks and needs across urban and rural areas. This is a new concept in the FENZ legislation.

Local Advisory Committees won't be appointed until after the public consultation on local advisory committee boundaries which will not start before 1 July 2017. They will have no governance, management, or operational control.

Greater Auckland was selected by the Board because it has New Zealand's most diverse community, contains a variety of fire-related risks and needs; ie cities, towns, an industrial sector, diversity in farming/land use, forestry plantations, and conservation land. Greater Auckland also has the benefit of being governed by a single unitary authority.

### Greater Auckland statistics

#### Population

- The population is 1.57 million people covering over 130 ethnic groups.

#### Land area and use

- Greater Auckland stretches from Wellsford in the north to Waiuku in the south including 24 Hauraki Gulf Islands and the Kermadec Group.
- 422,000 Ha of rural land within the rural fire district
- 70,000 Ha of urban fire districts
- 95 forest owners with plantations over 20ha covering 54,000 ha of forest plantation within Greater Auckland.
- The Department of Conservation has 32,300 ha of public conservation land

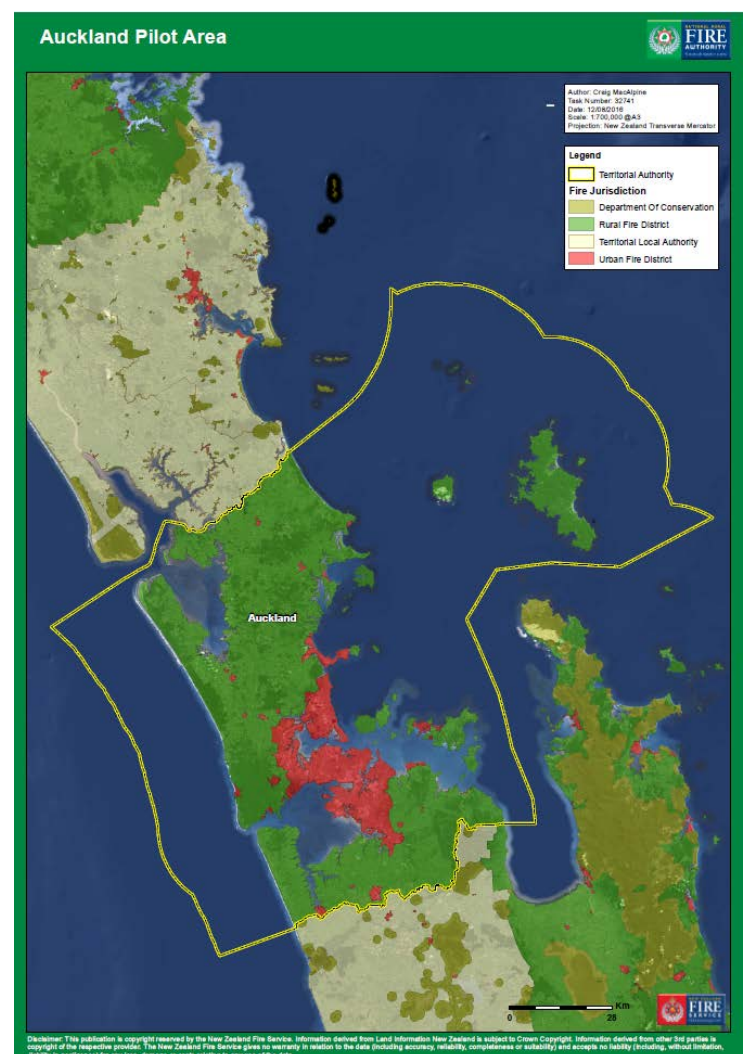
#### Rural fire services

- Prior to establishment of Auckland Council and ERFD, there were 9 Rural Fire Authorities within this area
- 11 Voluntary Rural Fire Forces
- 17 Voluntary Rural Fire Force stations
- 286 volunteers

#### Urban fire services

68 stations made up of:

- 29 Career Fire Stations with 547 paid fire fighters
- 39 NZFS Volunteer Fire Stations with 921 volunteer fire fighters
- 54 management and support staff



#### Other fire services

- 4 Industry Brigades
- DOC has 40 trained fire fighters in Greater Auckland.
- The NZDF Whenuapai airforce base is located within the Rural Fire District.
- The NZDF Devonport Naval Base is located within the urban fire district.